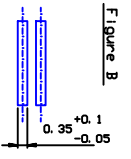
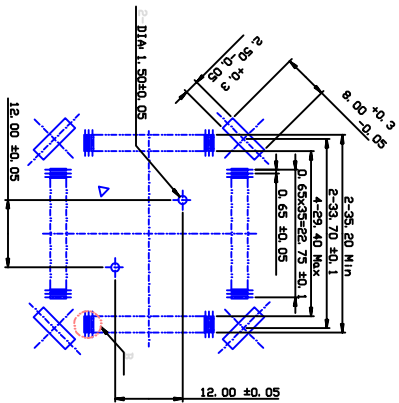
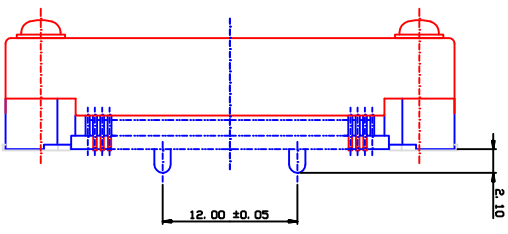
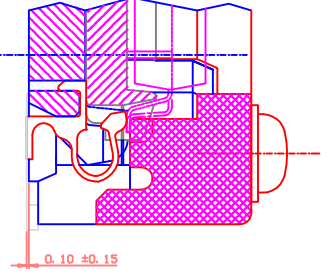
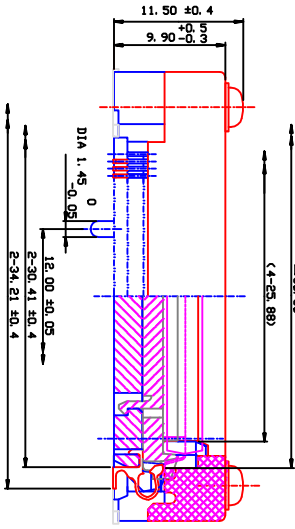
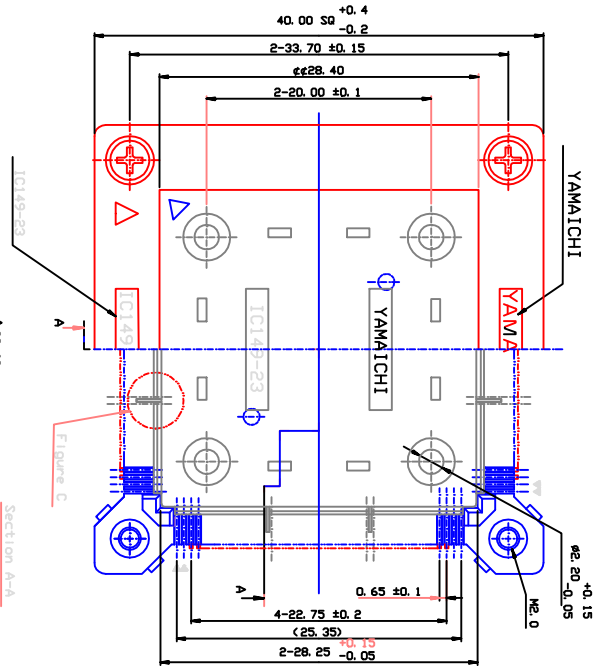


THE DRAWINGS AND INFORMATION CONTAINED HEREIN ARE THE EXCLUSIVE PROPERTY OF ACTEL. INFORMATION CONTAINED HEREIN IS UNCLASSIFIED AND NOT CONTROLLED. IT SHALL BE MAINTAINED IN STRICT CONFIDENCE, AND SHALL NOT BE RELEASED TO ANY THIRD PARTY WITHOUT THE EXPRESS WRITTEN PERMISSION OF ACTEL.



- Notes:
- Controlling dimensions are in millimeters.
 - Yamaichi socket number IC149-144K-11453-1S

Recommended PCB Layout

REV.	DESCRIPTION OF CHANGE	EFFECTIVE DATE	ORIGINATOR
0	Initial	12/15/98R	Kuang

UNLESS OTHERWISE SPECIFIED DIMENSIONS ARE IN MILLIMETERS		PRODUCTION	
DECIMAL	XX ±0.10	APPROVALS	DATE
ANGULAR	XXX ±0.05	DRAWN	10/21/98
	X.XXX ±0.03	CHECKED	
		ENGR'S	
		RELEASED	
SEE NOTES		ACTEL CORP 805 E. ANKERS AVE SUNNYVALE, CA 94086	
SEE NOTES		TITLE Yamaichi PQ144	
DO NOT SCALE DRAWING		Surface Mount Socket-alignment pins	
		ACTEL PART# SY-P0144-1	
		SCALE: NONE SHEET 1 OF 1	

ACTEL CONFIDENTIAL