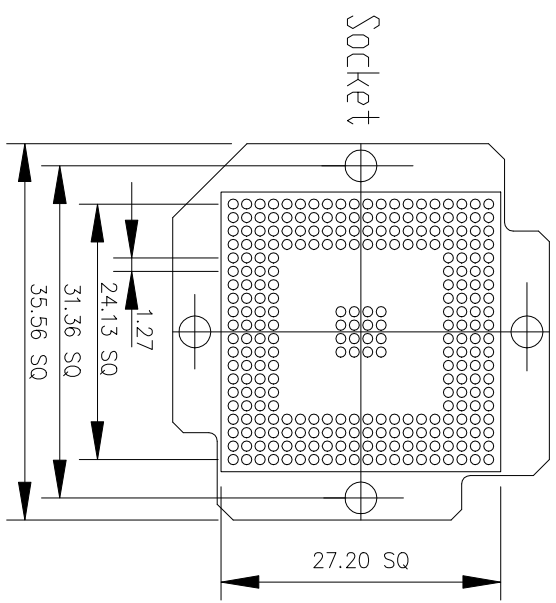
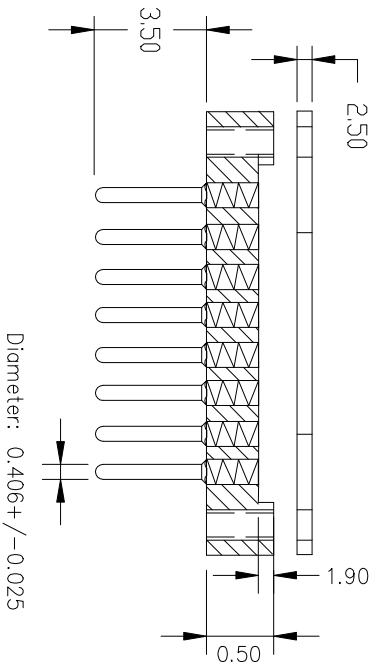


THE DRAWINGS AND INFORMATION CONTAINED HEREIN ARE THE EXCLUSIVE PROPERTY OF ACTEL. THE INFORMATION CONTAINED HEREIN IS UNCLASSIFIED AND DESIGN CONCEPTS CONTAINED HEREIN ARE CONFIDENTIAL/PROPRIETARY AND SHALL BE MAINTAINED IN STRICT CONFIDENCE. AND SHALL NOT BE RELEASED TO ANY THIRD PARTY WITHOUT THE EXPRESS WRITTEN PERMISSION OF ACTEL.



REV.	DESCRIPTION OF CHANGE	EFFECTIVE DATE	ORIGINATOR
0	Initial	5/6/99	Ray Kuang
1	change E-tec number to BPW272-1270-20AC11	1/6/2000	Ray Kuang

- NOTES: Dim: mm
- PIN MATERIAL: BRASS ALLOY 360, 1/2 HARD.
  - PIN FINISH: 10 μ" GOLD OVER 50 μ" NICKEL.
  - INSULATOR MATERIAL: FR-4 GLASS EPOXY
  - Contact: BeCu with gold plated

ACTEL CONFIDENTIAL

E-TEC PART#: BPW272-1270-20AC11  
E-TEC PATENTS PENDING

UNLESS OTHERWISE SPECIFIED DIMENSIONS ARE IN MILLIMETERS		PRODUCTION	
DECIMAL	X X ±0.10	APPROVALS	DATE
ANGULAR	±1°	Ray Kuang	4/27/99
X.XX ±0.05		CHECKED	
X.XXX ±0.03		INCR	
MATERIAL		RELEASED	
SPE NOTES			
SPE NOTES			
FINISH			
DO NOT SCALE DRAWING			
ACTEL CORP 955 B ARQUES AVE SUNNYVALE CA 94086		TITLE 272-27 x 27mm, 1.27mm E-TEC BGA SOCKET	
VENDOR NAME: E-TEC		ACTEL DWG. NUMBER: 1-07-09038	
VENDOR STD(PART) NUMBER: BPW272-1270-20AC11		VENDOR DWG. NUMBER:	
Acad Part# SE-96272-4		SCALE: NONE	
		SHEET 1 OF 2	